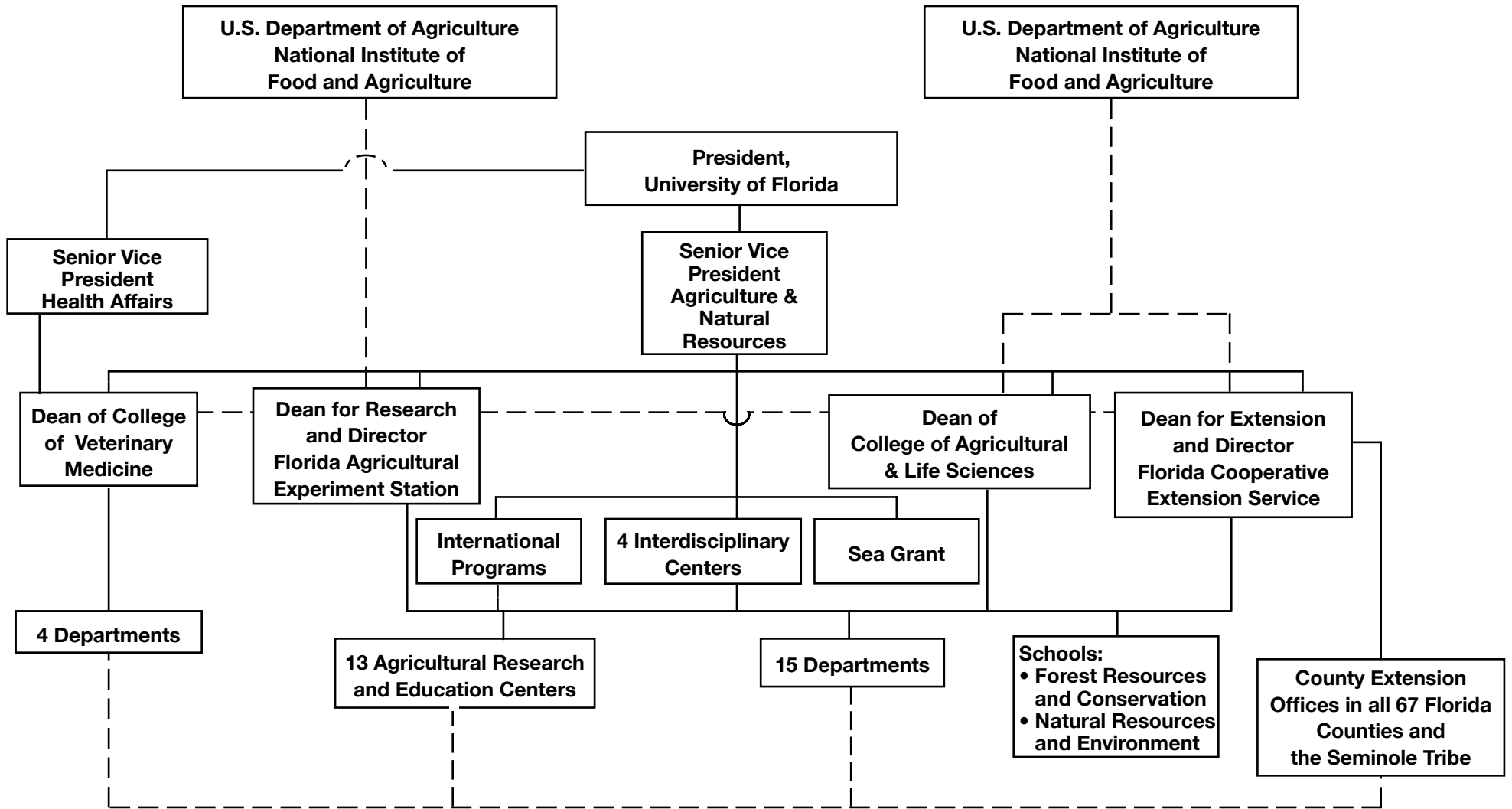


**Chart 1
University of Florida
Institute of Food and Agricultural Sciences
Programmatic Organization**



UF/IFAS Programmatic Organization

College of Agricultural and Life Sciences

Departments

Agricultural Education and Communication
Agricultural and Biological Engineering
Agronomy
Animal Sciences
Entomology/ Nematology
Environmental Horticulture
Food and Resource Economics
Food Science and Human Nutrition
Family, Youth, and Community Sciences
Horticultural Sciences
Microbiology and Cell Science
Plant Pathology
Soil and Water Science
Statistics
Wildlife Ecology and Conservation

Schools

School of Natural Resources and Environment
School of Forest Resources and Conservation
(includes Fisheries and Aquatic Sciences)

Interdisciplinary Centers

Center for Aquatic and Invasive Plants
Center for Cooperative Agricultural Programs
Center for Nutritional Sciences
Center for Tropical Agriculture

College of Veterinary Medicine

Departments

Large Animal Clinical Sciences
Infectious Diseases and Pathology
Physiological Sciences
Small Animal Clinical Sciences

Research and Education Centers - Conduct research, teaching, and extension programs.

Citrus Research and Education Center, Lake Alfred
Everglades Research and Education Center, Belle Glade
Florida Medical Entomology Lab, Vero Beach
Ft. Lauderdale Research and Education Center, Ft. Lauderdale
Gulf Coast Research and Education Center, Balm
Indian River Research and Education Center, Ft. Pierce
Mid-Florida Research and Education Center, Apopka
North Florida Research and Education Center, Quincy, Marianna,
Suwannee Valley – Live Oak
Range Cattle Research and Education Center, Ona
Southwest Florida Research and Education Center, Immokalee
Subtropical Agricultural Research Station, Brooksville
Tropical Research and Education Center, Homestead
West Florida Research and Education Center, Milton, Jay